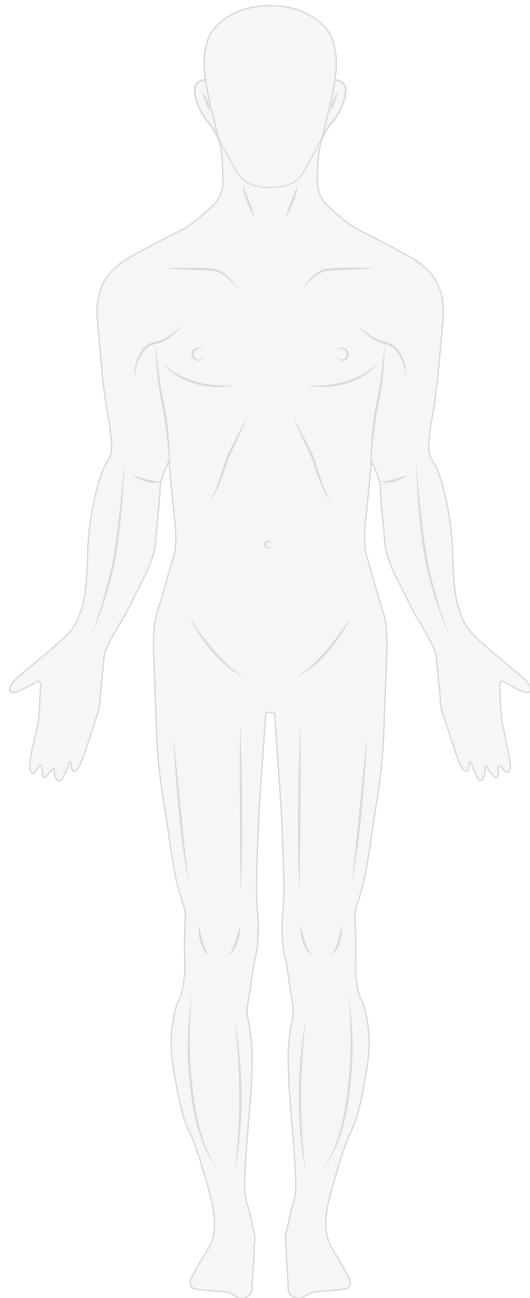


# ACCESSORIES



Orfit offers an extensive range of accessories to increase the precision and comfort of your treatment.

Vacuum bags

---

Moldcare

---

Bolus material

---

Cyberknife full body cushion

---

Comfort cushions

---

Water bath

---

Digital dry-heat convection oven

---

Cleaning products

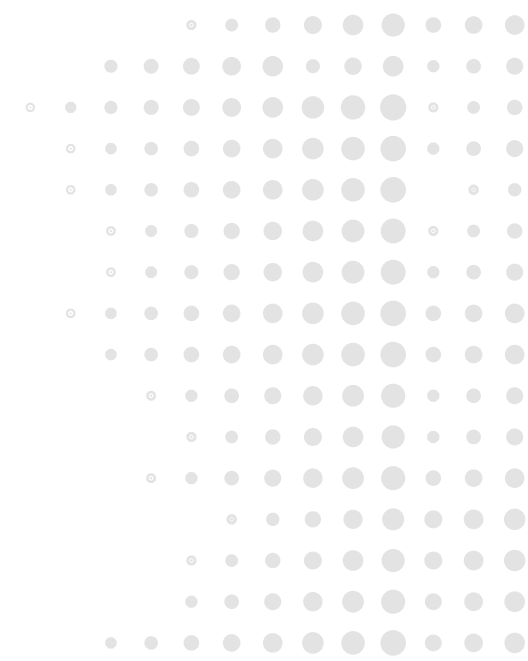
---

Storage solutions

---

Fixation devices

---



## VACUUM BAGS

The combination of Orfit Vacuum Bag Cushions and Efficast High Precision Frameless masks enables you to achieve a highly customized immobilization of your patient with high precision, excellent reproducibility and great comfort for the patient.

The Orfit Vacuum Bags are more narrow and longer than conventional vacuum bags. This ensures a much more intimate contouring to the patient's anatomy. The head and neck bags are designed for specific use in combination with the Orfit 3D shaped Head Supports and the Orfit Hybrid masks to offer an unsurpassed high precision immobilization that limits patient movement to 1.5 mm and less.

The half body bags for adults and the pediatric bags have a narrow shape to easily fit on the All-in-One and SBRT base plate in combination with an Efficast thermoplastic mask.

The Orfit Vacuum Bags are made from radio-translucent materials that will provide artefact free image clarity with minimal beam attenuation.

A special coated nylon bag material in combination with the thin fill helps to ensure intimate mold definition.

The bags are easy to clean and are designed to withstand the rough handling conditions of a busy radiation oncology department.

A molded Orfit Vacuum Bag will maintain its integrity during the course of treatment (up to six weeks), which ensures precise and reproducible patient positioning from imaging through the entire treatment process.

The Orfit vac bags are compatible for use with CT, MRI (when used with Orfit MRI compatible base plates), PET/CT, SPECT and Ultrasound imaging modalities.

The Orfit Vacuum Bag Cushion (VBC) System includes the following immobilization/positioning applications:

- > Custom individual patient head support: The small size Orfit bag (Art. N° 18208) when used in combination with the Orfit 3D Head Support enables you to create a custom head support mold that eliminates all gaps in the neck area while providing unmatched patient comfort.
- > Custom thoracic immobilization/positioning: The half-body Orfit bag (Art. N° 18056) is perfect when you need to create a customized thoracic immobilization. The half-body bag is compatible for use with the Orfit All-in-One Base Plate and SBRT Base Plates.
- > Custom pediatric CNS immobilization/positioning: The pediatric full body Orfit bag (Art. N° 18057) is designed specifically for CNS treatment.

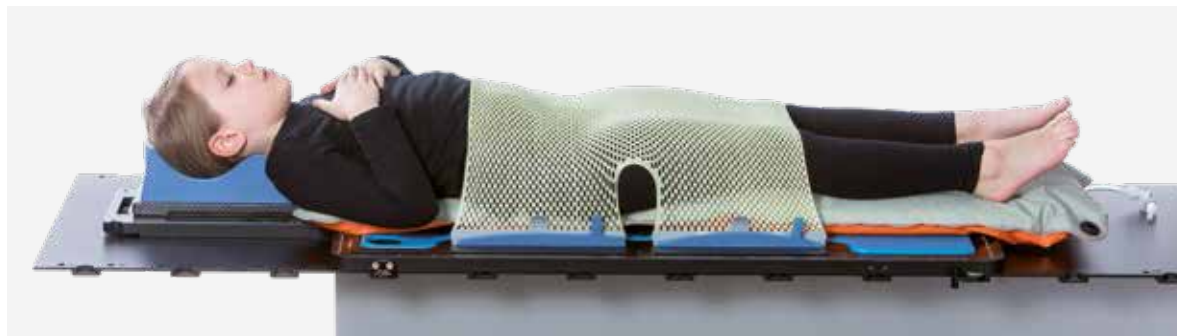
# VACUUM BAGS



Art. N° 18209  
AIO vacuum bag half body - adult



Art. N° 18211  
T-shape vacuum bag for head, neck and shoulders



Art. N° 18210  
AIO vacuum bag full body - pediatric



Art. N° 18208  
Individual head support vacuum bag

## VACUUM BAGS



### NON-INDEXED VACUUM BAGS

Art. N°	Product description
18200	Vacuum bag 700 x 1825 mm / 50 liter
18201	Vacuum bag 1130 x 1375 mm / 51 liter / T-shape
18202	Vacuum bag 850 x 1825 mm / 75 liter
18203	Vacuum bag 900 x 2325 mm / 117 liter
18204	Vacuum bag 700 x 1625 mm / 45 liter
18205	Vacuum bag 750 x 1025 mm / 35 liter
18206	Vacuum bag 700 x 1625 mm / 58 liter
18207	Vacuum bag 850 x 1540 mm / 53 liter
18208	Vacuum bag 200 x 450 mm / 0.9 liter
18209	Vacuum bag 480 x 900 mm / 16 liter
18210	Vacuum bag 340 x 1240 mm / 16 liter
18211	Vacuum bag 595 x 600 mm / 7 liter / T-shape Head, neck and shoulders
18212	Vacuum bag 700 x 1000 mm / 30 liter



### INDEXED VACUUM BAGS

Art. N°	Product description
18200/INDEX	Vacuum bag 700 x 1825 mm / 50 liter - indexed
18201/INDEX	Vacuum bag 1130 x 1375 mm / 51 liter / T-shape - indexed
18202/INDEX	Vacuum bag 850 x 1825 mm / 75 liter - indexed
18203/INDEX	Vacuum bag 900 x 2325 mm / 117 liter - indexed
18204/INDEX	Vacuum bag 700 x 1625 mm / 45 liter - indexed
18205/INDEX	Vacuum bag 750 x 1025 mm / 35 liter - indexed
18206/INDEX	Vacuum bag 700 x 1625 mm / 58 liter - indexed
18207/INDEX	Vacuum bag 850 x 1540 mm / 53 liter - indexed

## VACUUM BAG ACCESSORIES

### HOSES AND CONNECTORS



**Art. N° 18097**  
Hose connector for hose ID4 + 5/32



**Art. N° 18054**  
Transparent hose ID4 (2 meters)

### SIDE PANELS FOR MOLDING



**Art. N° 32030**  
Side panels for individual cushions (4 pcs.)

### PUMPS



**Art. N° 18058**  
Vacuum pump with hose,  
hose connector and cable



**Art. N° 18076**  
High capacity vacuum pump with hose,  
hose connector and cable

Art. N°	Voltage	Country
18058/230EU	230	EU
18058/230UK	230	UK
18058/230CH	230	CH
18058/100J	100	J
18058/115	115	US
18076/230EU	230	EU
18076/230UK	230	UK
18076/230CH	230	CH
18076/100J	100	J
18076/115	115	US

## VACUUM BAG ACCESSORIES

### INDEXING DEVICES

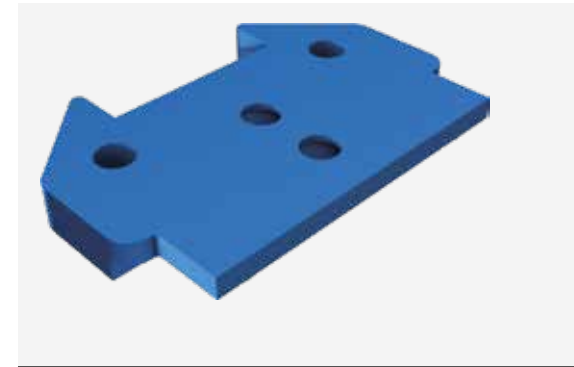
You can easily index the vacuum bags directly to the couch top using a 2-pin bar.



**MIRIDIAN** 

Art. N° 18059  
Indexing bar (1pc.)

The arm rest adapter provides increased comfort and support by ensuring a smooth transition from thorax to shoulders and arms.



Art. N° 29036

AIO arm rest adapter for use with vacuum bag



The indexing bar can be used in combination with a 2-pin bar or an Orfit base plate

# MOLDCARE\*



Art. N° 18090  
15 cm x 20 cm



Art. N° 18091  
20 cm x 25 cm



Art. N° 18092  
20 cm x 45 cm



Art. N° 18094  
Moldcare cushion type S

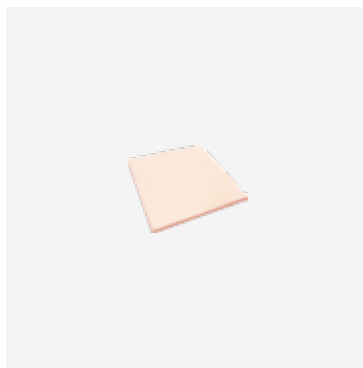


\* Moldcare is a trademark from ALCARE

# BOLUS MATERIAL

The thermoplastic bolus material, which is available in sheets and pellets, is a specially formulated, rigid thermoplastic with a low melting temperature. It is very easy to mold and can be placed on thermoplastic masks. After heating, it also sticks to itself, which makes it possible to make thicker bolus sheets if needed.

## SHEETS BEIGE



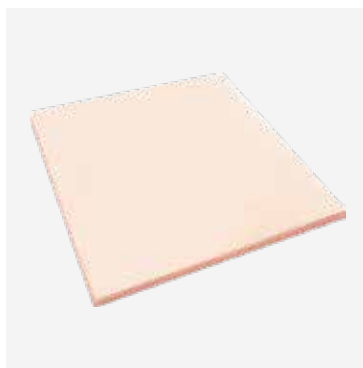
Art. N° 8336.S01/R/53  
10 cm x 10 cm x 5 mm



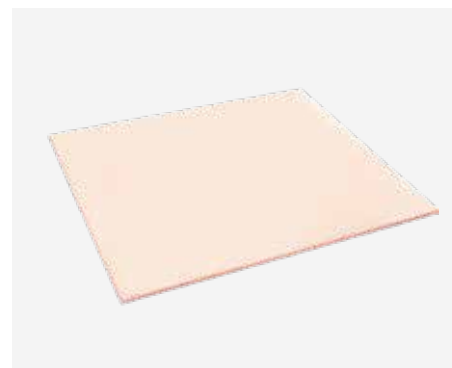
Art. N° 8336.S01/R/58  
15 cm x 15 cm x 5 mm



Art. N° 8336.S01/R/59  
20 cm x 20 cm x 5 mm



Art. N° 8336.S01/R/60  
30 cm x 30 cm x 5 mm

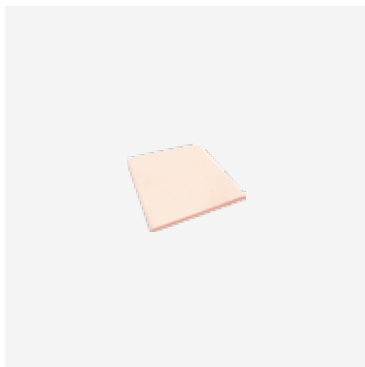


Art. N° 8333.S01/R  
45 cm x 60 cm x 2 mm



## BOLUS MATERIAL

### SHEETS BEIGE



Art. N° 8336.S01/R/53 - 1 CM  
10 cm x 10 cm x 10 mm



Art. N° 8336.S01/R/58 - 1 CM  
15 cm x 15 cm x 10 mm



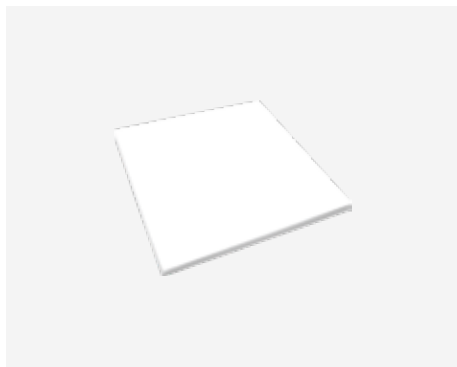
Art. N° 8336.S01/R/59 - 1 CM  
20 cm x 20 cm x 10 mm



Art. N° 8336.S01/R/60 - 1 CM  
30 cm x 30 cm x 10 mm

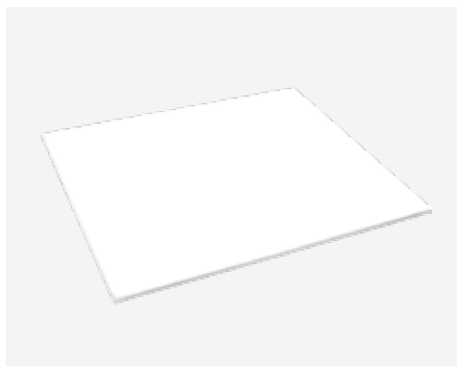
## BOLUS MATERIAL

### SHEETS WHITE



Art. N° 8313N.S01/R

22.5 cm x 20 cm x 2 mm



Art. N° 8333N.S01/R

45 cm x 60 cm x 2 mm

### PELLETS



Art. N° 703011/1

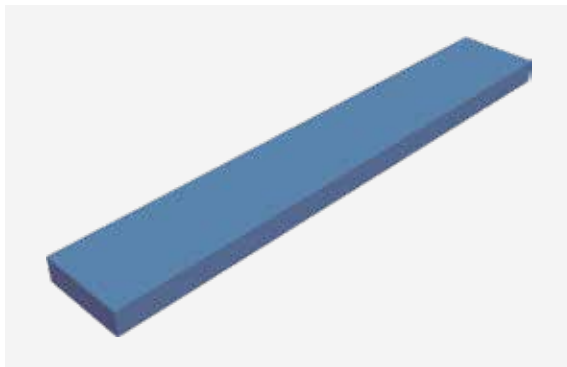
Bag of 500g

## CYBERKNIFE FULL BODY CUSHION

The full body cushion for the Cyberknife Couch Top is designed for spinal and thorax treatment. The patient is positioned supine on the cushion with the arms along the side of the body.

Due to the narrow width of the cushion, the arms will be positioned next to the cushion on the treatment table, instead of on top of the cushion.

This allows the use of lateral fields to radiate the spine and thorax without the arms being located in the treatment field.



Art. N° 32118

Cyberknife full body cushion



# COMFORT CUSHIONS



## COMFORT CUSHIONS

### PATIENT SUPPORT CUSHIONS



Art. N° 32005/2-V2  
Trunkal cushion  
800 x 400 x 20 mm



Art. N° 32005/4-V2  
Small block  
200 x 200 x 40 mm



Art. N° 32005/5-V2  
Medium block  
200 x 200 x 60 mm



Art. N° 32005/6-V2  
Large block  
200 x 200 x 100 mm



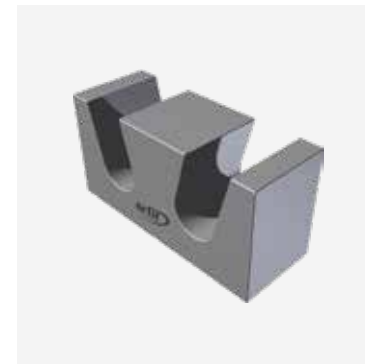
Art. N° 32005/8-V2  
Wide wedge  
400 x 250 x 100 mm  
19.8°



Art. N° 32005/8A-V2  
Small wedge  
200 x 250 x 100 mm  
19.8°



Art. N° 32005/10-V2  
Leg support  
400 x 400 mm



Art. N° 32005/11-V2  
Foot support  
400 x 150 x 200 mm

## COMFORT CUSHIONS

### PATIENT SUPPORT CUSHIONS



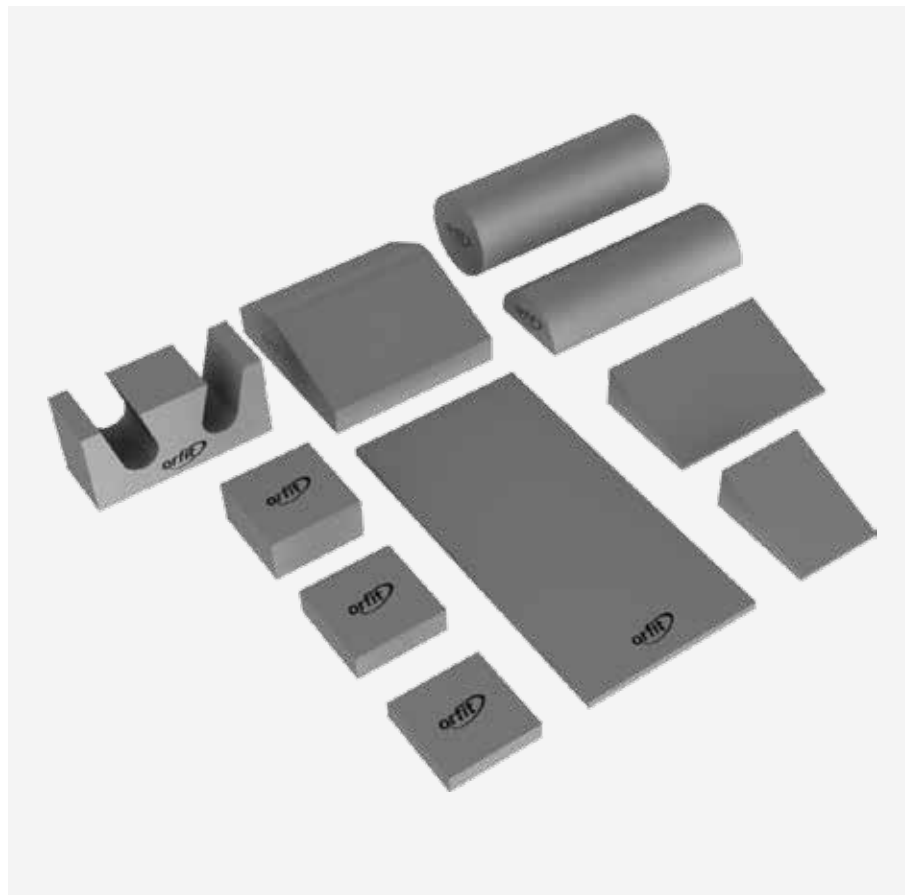
Art. N° 32005/14-V2

Cylindrical  
knee support  
544 x D200 mm



Art. N° 32005/15-V2

Half cylindrical  
knee support  
544 x R100/50 mm



Art. N° 32006-V2

Set of 10 comfort cushions

Use in combination  
with our standard  
products to increase  
patient comfort.

## ACCESSORIES

# WATER BATH

(NOT AVAILABLE IN NORTH AMERICA)

## FEATURES AND BENEFITS

Extra-large to fit every size of mask  
(inner dimensions: 74cm x 54.5cm x 9.5cm).

A grill to lift the mask out of the water  
without putting your hands in the water.

A built-in thermometer (°C and °F) that  
indicates when the water has reached the  
target temperature.

A built-in timer.

Easy to empty with a tap on the side.

Available in 115V and 230V.



Art. N° 35097/RE

Cleaning product for water bath

500 ml

Art. N°	Voltage	Plug Type
35097/115/1400	115	US
35097/230/1400	230	EU
35097/230/1400/UK	230	UK

# WATER BATHS

(ONLY AVAILABLE IN NORTH AMERICA)

## FEATURES AND BENEFITS

### Art. No. 35098/L

#### Digital stainless steel water bath - extra large

- > Interior dimensions: 26" (L) x 22" (W) x 5" (H).
- > Extra large tank handles the largest size thermoplastic masks and sheets.
- > Overall dimensions: 33"(L) x 26"(W) x 8" (H).
- > Digital control ensures precise water bath temperatures within  $\pm 1$  degree.
- > Hinged lid opening in four positions.
- > Bright LED display - easy to use.



Art. N° 35098/L

### Art. No. 35098

#### Stainless steel water bath - large: analog controls

- > Interior dimensions: 24 1/2" (L) x 18 1/2" (W) x 5" (H).
- > Accommodates large size thermoplastic masks and sheets.
- > Overall dimensions: 28 1/2" (L) x 21" (W) x 7" (H).
- > Hinged stainless steel split-lid is designed to open completely or to one side with one hand leaving the other hand free.
- > Dual high/low thermostatic temperature controls.



Art. N° 35098



Art. N° 35097/RE

Cleaning product for water bath  
500 ml



# DIGITAL DRY-HEAT CONVECTION OVEN

## FEATURES AND BENEFITS

The Dry Oven is ready for use within a few minutes of starting the heating cycle.

The Dry Oven uses a highly accurate Digital temperature controller. The controller incorporates set point and process temperature displays. The temperature can be adjusted between 65°C - 82°C (150°F - 180°F).

The drawer incorporates a non-stick support rack sized to accept 5-points head, neck and shoulder masks.

Art. N°	Voltage	Plug Type
35121/230EU	230	UK
35121/230UK	230	UK
35121/120US	120	US



# CLEANING PRODUCTS



Art. N° 32836

Aniospray Quick

[3 bottles and 1 atomizer]



Art. N° 32837

Wip'anios Excel package (100 wipes)

These spray and wet wipes cleaning products are suitable for cleaning of Orfit immobilization devices.

# STORAGE SOLUTIONS



Art. N° 32044  
Storage stand for base plates



Art. N° 29099  
Wall mount storage stand for base plates

# FIXATION DEVICES

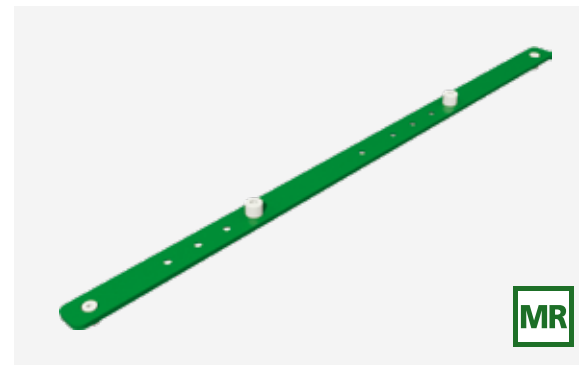
Other fixation devices can be found on [www.orfit.com](http://www.orfit.com)



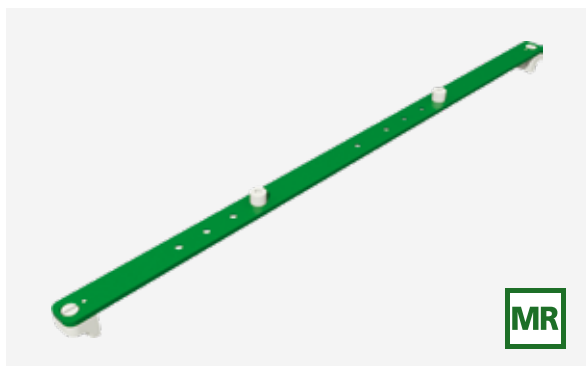
Art. N° 32154  
2-pin indexing bar for Exact\* couches



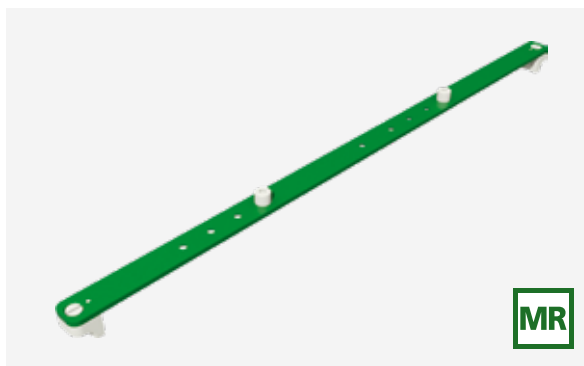
Art. N° 32166  
2-pin indexing bar for Exact\* couches



Art. N° 32191  
2-pin indexing bar for iBEAM\* couches



Art. N° 32165  
2-pin indexing bar for Prodigy couches - 53 cm



Art. N° 32208  
2-pin indexing bar for Prodigy 2 couch - 53 cm



Art. N° 32190  
2-pin indexing bar for Pinpoint couches - 50 cm

\*Exact is a trademark of VARIAN Medical Systems Inc. / \*iBEAM is a trademark of Medical Intelligence