

**RAYCAST® HIGH PRECISION
BASE PLATE-TO-COUCH TOP
FIXATION DEVICES
2-PIN BAR FOR INTERLOC
COUCH 50.0 CM
(MRI COMPATIBLE)**



Article No. : **32207**

A. GENERAL PRODUCT INFORMATION

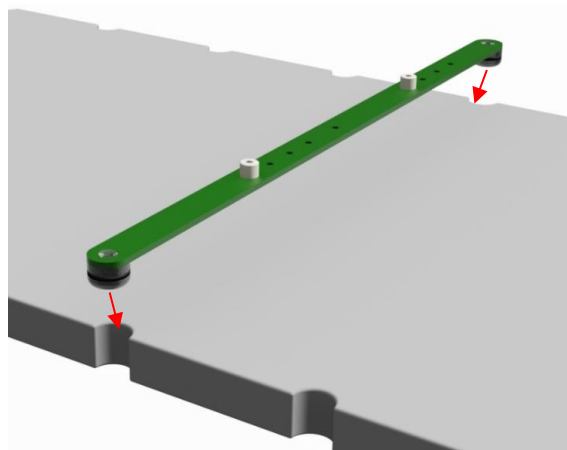
This product is a fixation device to attach Raycast® High Precision base plates to Interloc couch tops with a width of 500 mm.

B. PRODUCT DESCRIPTION

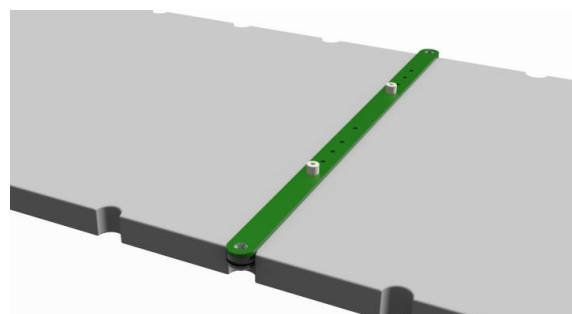
This 2-pin bar has two positioning elements that can be inserted in the half-moon cut-outs on both sides of the Interloc couch. It can be used to index hardware (base plates, shoulder positioning device, leg indexing system, etc.) directly or via an adapter plate to the couch. For information on the compatible products, please refer to the respective 'instructions for use'.

C. POSITIONING ON A COUCH

The two round positioning elements of this fixation device fit directly in the cut-outs of an Interloc couch.



To position this 2-pin bar on such a couch, gently push the bar with its two indexing elements into a set of couch cut-outs. The bar itself should now be flat on the surface of the couch. Always make sure that the bar is well positioned on the couch before indexing the other hardware to the 2-pin bar.



Orfit hardware is mounted on the 2-pin bar by simply pushing it over the 2 middle pins.

When an indexing pin needs to be replaced simply use a Phillips head screwdriver to do so.

D. STORAGE

Always store the product in a safe place to prevent it from getting damaged.

Store the product between +10°C (50°F) and 40°C (122°F).

E. PROPERTIES

E.1 Physical Properties

Dimensions : L 519 mm x W 25.5 mm x H 29 mm

Weight: 0.1 kg

E.2 Material Properties

Material POM (pins/blocks): 1,4 gr/cm³

Material PC (screws): 1,2 gr/cm³

Material Glass Fibre (bar): 1,8 gr/cm³

This product is made entirely of durable plastics and is MR-safe.



Warning: keep metal wrenches which might be supplied in the package out of the MRI room.

E.3 Dosimetric Properties

Attenuation factor (± 0.15 %)	
6 MV	2.67 %
15 MV	2.00 %
H ₂ O equivalence	7.72 mm

Note: Use these numbers as a guidance only. Perform the measurements again in your department to verify these results.

F. MAINTENANCE AND WASTE MANAGEMENT

This product can be cleaned and disinfected by means of soapy water or an isopropanol based disinfectant, applied with a soft cloth. If unsure about the cleaning fluid, do not use. **Never use aerosol sprays, corrosive cleaning agents, solvents or abrasive detergents.**

Periodic checks of the product should be done to insure the parts are not worn and require repair or replacement. **Do not attempt to make repairs yourself.** Contact your distributor if there are any questions or concerns.

The product can be disposed of with household waste.

G. ADDITIONAL INFORMATION

For additional information such as distributor contact information, product brochures, Safety Data Sheets and regulatory information, please visit our website www.orfit.com.

Note:

It is prohibited to make alterations to this text without prior approval from Orfit Industries.
RAYCAST[®] is a registered trademark of ORFIT Industries



ORFIT INDUSTRIES
Vosveld 9A | B-2110 Wijnegem | Belgium
T (+32) (0)3 326 20 26
welcome@orfit.com

www.orfit.com



Ref. No. 50132

VERSION 3

LAST UPDATE: 02/04/2021

REVISION DATE: 02/04/2023